



A BANDAI VISUAL, TV TOKYO, WARNER BROS. PICTURES JAPAN,
TOHOKUSHINSHA FILM CORPORATION AND OFEKE KETANO PRODUCTION
A KEI ISHIKAWA FILM "GUKOROKU - TRACES OF SIN" SATOSHI TSUMABUKI HIRAKI MITSUSHIMA

KESUKE KOBAYASHI ASAMI USUDA YUTICHIKAWA TOMOYA NAKAMURA
WAKANA MATSUMOTO HIROKAZU NASHIMURA HARU HAMADA MITSURU HIRATA

BASED ON THE NOVEL "GUKOROKU" BY TOKURO NUKUN SCREENPLAY KOSUKE MUKAI MUSIC TAKASHI OHNAMA
DIRECTOR OF PHOTOGRAPHY PROTA NIIMYOSHI P.S.C. LIGHTING KENJIRO OTA PRODUCTION DESIGNER TATSUO OZeki

SOUND DESIGN YOSHIFUMI KUREKISHI EDITOR YOSHINOBU OTA CASTING TAKEFUMI YOSHIKAWA
FIRST ASSISTANT DIRECTOR HIROFUMI KAWAGUCHI PRODUCTION MANAGER MASATO DATE SOUND EFFECTS EDITOR KENJI SHIRASAKI
COSTUME DESIGN SUEI MOIRIGUCHI SET DECORATOR KOJI SHIMODA MAKE-UP ARTIST SUGURU NASUHO

MUSIC PRODUCER TOSHIHIRO SUGITA LINE PRODUCER SHINJI KOMIYA
ASSOCIATE PRODUCERS KAZUHI KAWASHIRO TETSUO OTA KOTAKA NINOMIYA
EXECUTIVE PRODUCER MASAYUKI MORI CO-EXECUTIVE PRODUCER TAKAO YOSHIDA
PRODUCED BY MAKOTO KAKURAI DIRECTED AND EDITED BY KEI ISHIKAWA
WORLD SALES ALPHA VIOLET

© 2007 "GUKOROKU" - TRACES OF SIN PRODUCTION COMPANY. ALL RIGHTS RESERVED.



ALPHA VIOLET



A film by Kei Ishikawa

GUKOROKU TRACES OF SIN

Gukoroku - TRACES OF SIN

a film by Kei ISHIKAWA

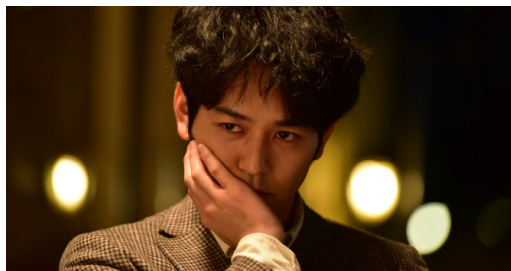
Japan - 2016 - 120 min - HD - 1:2.35 - 5.1 - Japanese

Synopsis

Tanaka is going through a tough time trying to support his younger sister Mitsuko, recently arrested and on hold in jail.

An investigative reporter, he immerses himself into a story about a shocking murder case gone cold. The "perfect" family – successful businessman, beautiful wife and adorable child – were brutally murdered a year ago and the case remains unsolved.

Tanaka interviews their friends and acquaintances, and as stories of their true nature unfold, he discovers that the family was not as ideal as believed. The interviewees themselves unveil their own hidden natures, revealing a disturbing portrait of social elitism.



Main Cast

Satoshi TSUMABUKI	(Tanaka)
Hikari MITSUSHIMA	(Mitsuko)

Crew

Directed and edited by	Kei ISHIKAWA
Based on the novel	
"Gukoroku" by	Tokuro NUKUI
Screenplay	Kosuke MUKAI
DOP	Piotr NIEMYJSKI, PSC.
Music	Takashi OHMAMA
Executive producer	Masayuki MORI
Co-executive producer	Takio YOSHIDA
Associate producers	Kazumi KAWASHIRO
	Tetsuo OTA
	Kiyotaka NINOMIYA
Producer	Makoto KAKURAI

a BANDAI VISUAL, TV TOKYO, WARNER BROS. PICTURES JAPAN, TOHOKUSHINSHA FILM CORPORATION and OFFICE KITANO production

Director's bio & filmo

Gukoroku - TRACES OF SIN is Kei Ishikawa's first feature film.

Born in Japan in 1977, Kei Ishikawa studied physics at Tohoku University (Japan) and film directing at the Łódź Film School (Poland). He has made several short films that have been screened at film festivals worldwide: 2008's DEAR WORLD (Sitges, Mar Del Plata) and 2009's IT'S ALL IN THE FINGER (New Directors, New Films). DEAR WORLD received the Special Prize from the Akira Kurosawa Foundation. In 2013, his Japanese-Polish co-production feature project 'BABY' won the Bucheon Award from the Network of Asian Fantastic Films (NAFF) hosted by the Bucheon International Fantastic Film Festival.



ALPHA VIOLET (world sales)
Paris, France
info@alphaviolet.com
+33 1 47 97 39 84
www.alphaviolet.com

